



CHERIE
BERGER
TEAM

November 2025

Watchung Market Insights

NOVEMBER 2025

Watchung

NOVEMBER 2025

Market Profile & Trends Overview

The table belows shows data & statistics for November 2025 (CM), and the percentage difference of these metrics compared to data from last month (LM), the last three months (L3M), the same month last year (PYM), the entire last year (LY), prior year (PY), year-to-date (YTD), and the prior year-to-date (PYTD).

		CM	LM	L3M	PYM	LY	PY	YTD	PYTD
Inventory	# OF PROPERTIES	8	-20%	-31%	-20%	-40%	-29%	-	-
	MEDIAN PRICE	\$1,242,000	0%	6%	40%	15%	10%	-	-
	AVERAGE PRICE	\$1,482,250	-3%	19%	42%	27%	22%	-	-
	PRICE PER SQFT	\$311	-12%	-6%	10%	-4%	1%	-	-
	MONTHS OF SUPPLY	1.6	-4%	-30%	-4%	-37%	-60%	-	-
New Listings	# OF PROPERTIES	5	-50%	-29%	-17%	-29%	-9%	73	10.6%
	MEDIAN PRICE	\$875,000	-9%	-10%	-1%	-6%	-8%	\$989,000	-1.0%
	AVERAGE PRICE	\$1,281,600	-12%	15%	25%	28%	23%	\$1,204,155	6.6%
	PRICE PER SQFT	\$300	-7%	-7%	1%	-2%	11%	\$342	17.9%
Sales	# OF PROPERTIES	5	-17%	-6%	-17%	5%	11%	54	5.9%
	MEDIAN PRICE	\$1,170,000	20%	25%	34%	12%	30%	\$992,000	4.4%
	AVERAGE PRICE	\$1,103,900	14%	8%	15%	4%	9%	\$1,170,426	7.2%
	PRICE PER SQFT	\$342	-13%	39%	5%	2%	49%	\$342	22.1%
	SALE-TO-LIST RATIO	99.3%	-4.1%	0%	-0.4%	-1.4%	-2.0%	101.6%	1.1%

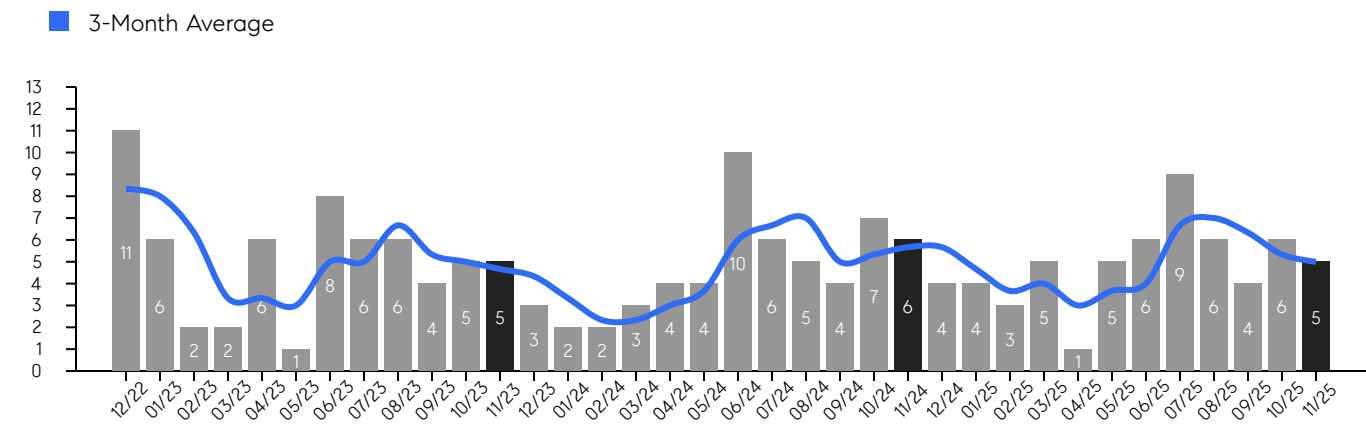
© 2025. Based on information from Garden State MLS, LLC for the period of January 2018 through November 2025. Due to MLS reporting methods and allowable reporting policy, this data is only informational and may not be completely accurate. Data maintained by the MLS may not reflect all real estate activity in the market.

Watchung

NOVEMBER 2025

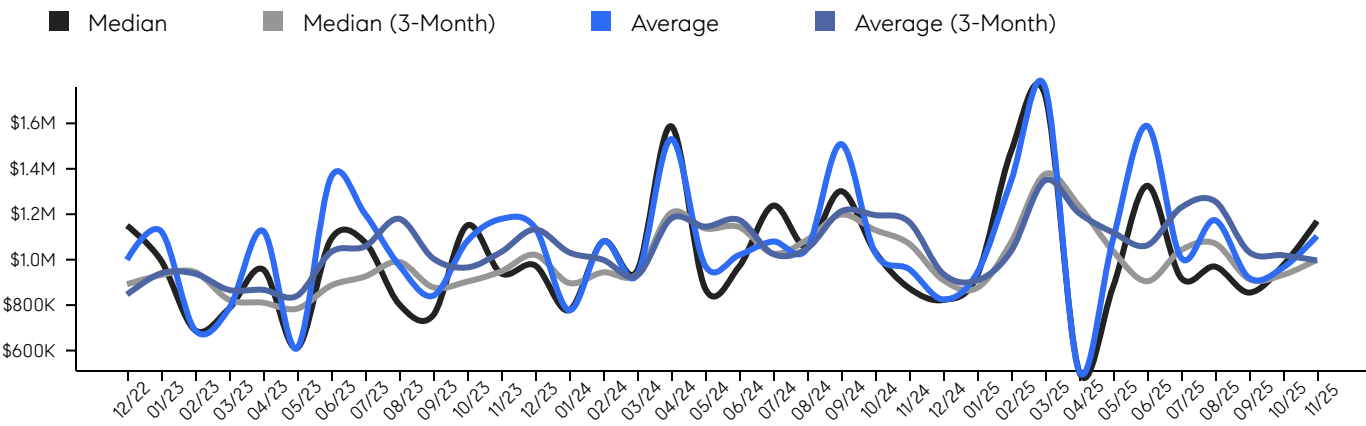
Property Sales

There were 5 sales in November 2025, a change of -17% from 6 in November 2024 and -17% from the 6 sales last month. Compared to November 2023 and 2024, sales were at a similar level. There have been 54 year-to-date (YTD) sales, which is 5.9% higher than last year's year-to-date sales of 51.



Property Prices

The median sales price in November 2025 was \$1,170,000, a change of 34% from \$875,000 in November 2024, and a change of 20% from \$974,500 last month. The average sales price in November 2025 was \$1,103,900, a change of 15% from \$958,667 in November 2024, and a change of 14% from \$964,850 last month, and was mid level compared to 2024 and 2023.



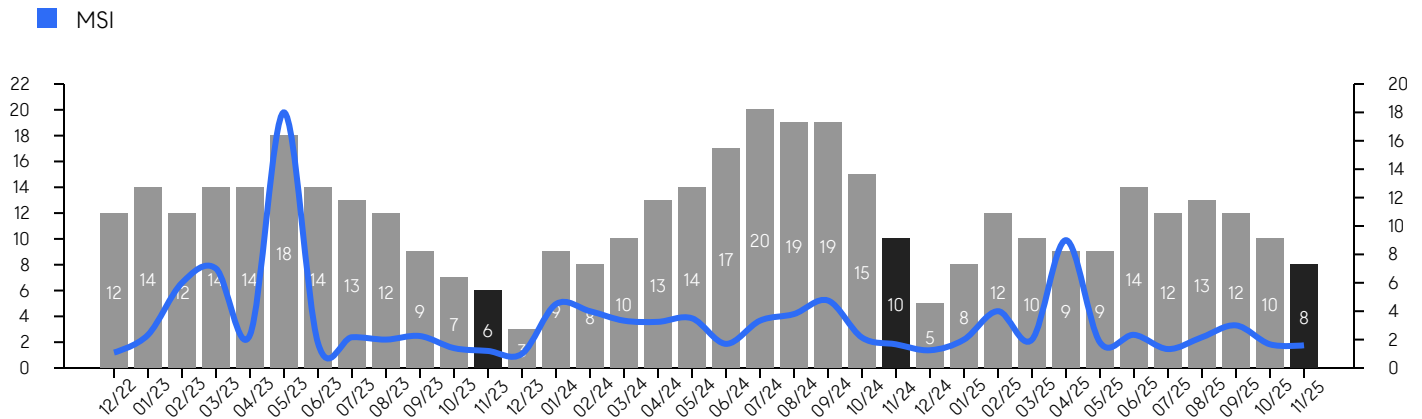
© 2025. Based on information from Garden State MLS, LLC for the period of January 2018 through November 2025. Due to MLS reporting methods and allowable reporting policy, this data is only informational and may not be completely accurate. Data maintained by the MLS may not reflect all real estate activity in the market.

Watchung

NOVEMBER 2025

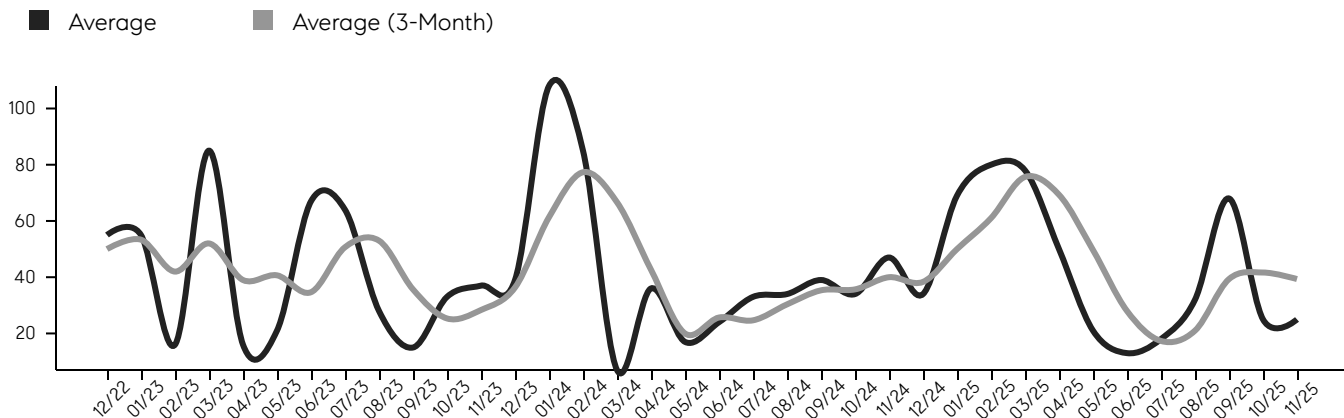
Inventory & MSI

The total inventory of properties available for sale as of November 2025 was 8, a difference of -20% from - last month, and -20% from 10 in November 2024, and was at mid level compared to 2024 and 2023. The months of supply inventory (MSI) was at 1.6 months, a similar level compared to 2024 and 2023. A comparatively lower MSI benefits sellers, while a higher MSI benefits buyers.



Market Time

The average days on market (DOM) shows the number of days the average property is on the market before selling. An upward trend tends to indicate a move towards a buyer's market, while a downward trend tends to indicate a move to a seller's market. The DOM for November 2025 was 25, a change of 0% from 25 days last month, and -47% from 47 days in November 2024, and was at its lowest level compared to 2024 and 2023.



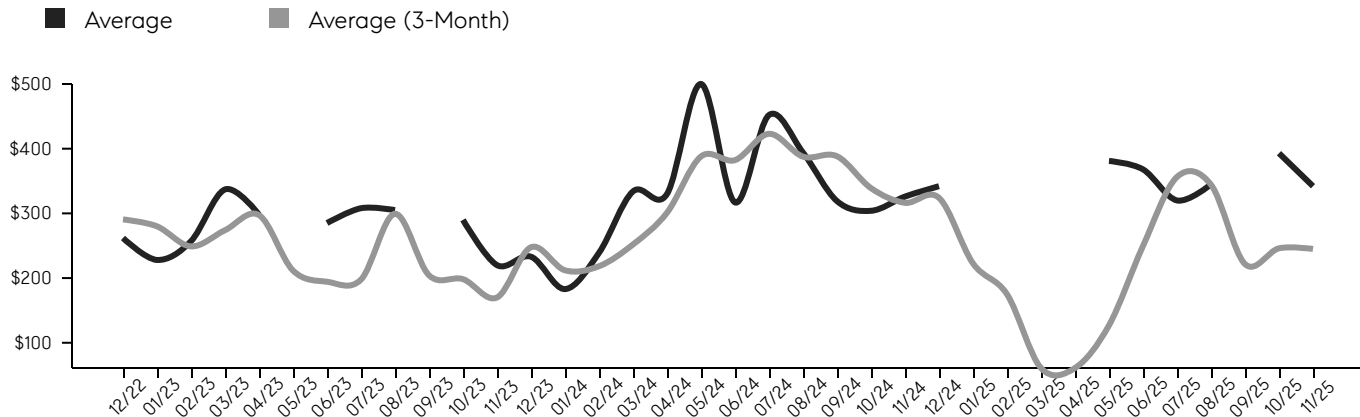
© 2025. Based on information from Garden State MLS, LLC for the period of January 2018 through November 2025. Due to MLS reporting methods and allowable reporting policy, this data is only informational and may not be completely accurate. Data maintained by the MLS may not reflect all real estate activity in the market.

Watchung

NOVEMBER 2025

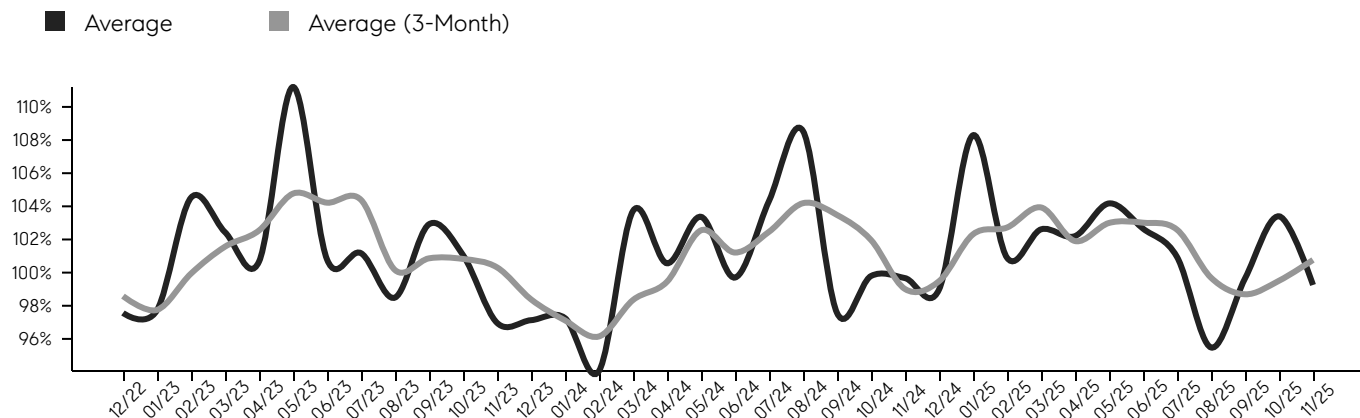
Selling Price Per Square Foot

The selling price per square foot (PPSF) is a great indicator for the direction of property values. Since median & average sales prices can be impacted by the "mix" of high or low end properties in the market, the selling price per square foot is a more normalized indicator on the direction of property values.



Selling Price vs. Listing Price

The selling price vs. listing price reveals the average amount that sellers are agreeing to come down from their list price. The lower the ratio is below 100%, the more of a buyer's market exists, while a ratio at or above 100% indicates more of a seller's market. The November 2025 selling price vs. listing price ratio was 99.3%, compared to 103.4% last month, and 99.7% in November 2024.



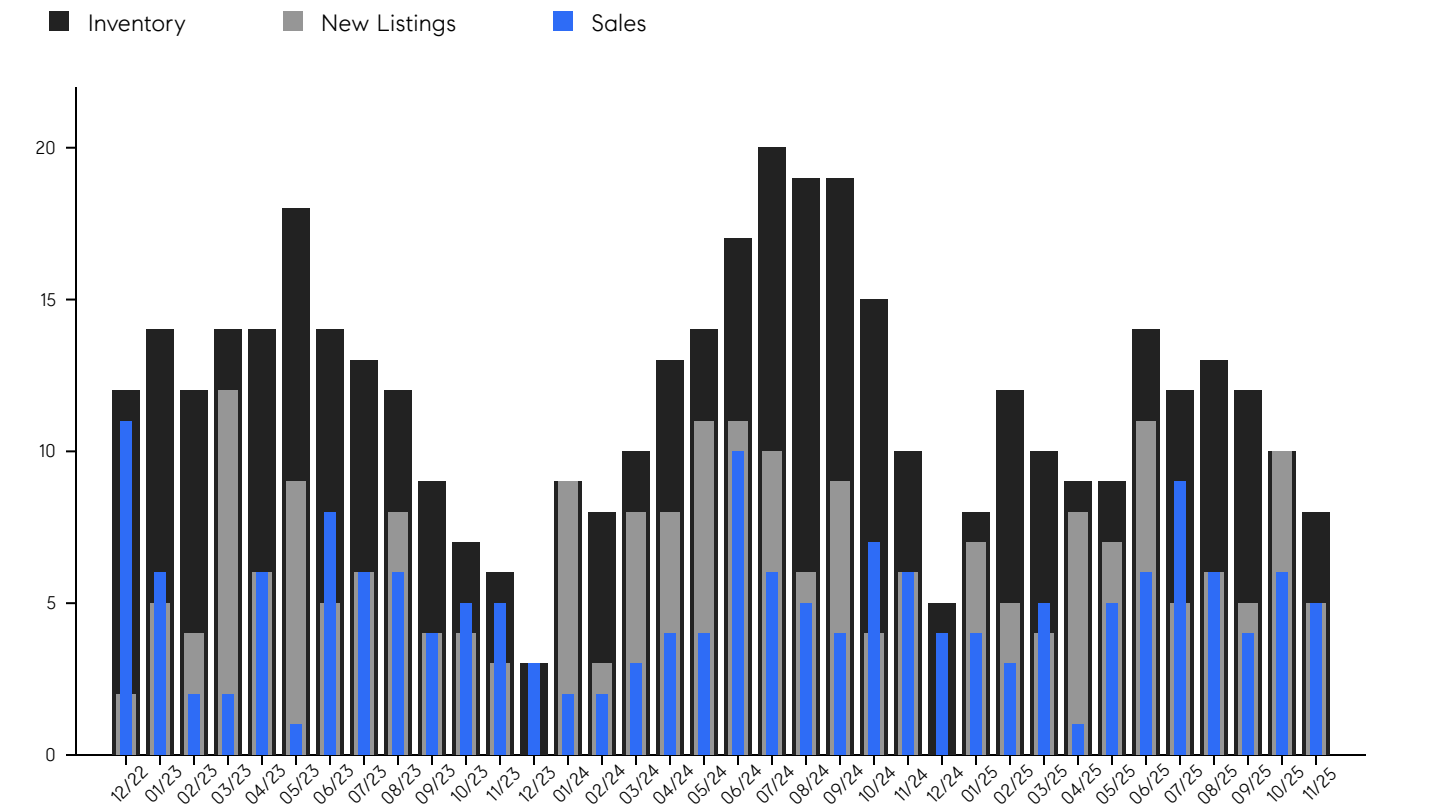
© 2025. Based on information from Garden State MLS, LLC for the period of January 2018 through November 2025. Due to MLS reporting methods and allowable reporting policy, this data is only informational and may not be completely accurate. Data maintained by the MLS may not reflect all real estate activity in the market.

Watchung

NOVEMBER 2025

Inventory, New Listings & Sales

This last view of the market combines monthly inventory of properties for sale along with new listings and sales. The graph shows the basic annual seasonality of the market, as well as the relationship between these items. The number of new listings in November 2025 was 5, a change of -50% from 10 last month and -17% from 6 in November 2024.



© 2025. Based on information from Garden State MLS, LLC for the period of January 2018 through November 2025. Due to MLS reporting methods and allowable reporting policy, this data is only informational and may not be completely accurate. Data maintained by the MLS may not reflect all real estate activity in the market.

Watchung

NOVEMBER 2025

MONTH	# OF SALES	3-MO AVG	MEDIAN SALE PRICE	3-MO AVG	AVERAGE SALE PRICE	3-MO AVG	DAYS ON MARKET	3-MO AVG	AVERAGE PPSF	3-MO AVG	SALE / LIST	3-MO AVG	INV	NEW LISTINGS	MSI
Nov '25	5	5	\$1.1M	\$1M	\$1.1M	\$996K	25	39	\$342	\$245	99.3%	100.8%	8	5	1.6
Oct '25	6	5	\$974K	\$933K	\$964K	\$1M	25	42	\$393	\$246	103.4%	99.5%	10	10	1.7
Sep '25	4	6	\$855K	\$915K	\$920K	\$1M	68	39	\$0	\$222	99.6%	98.7%	12	5	3.0
Aug '25	6	7	\$969K	\$1M	\$1.1M	\$1M	32	21	\$345	\$344	95.5%	99.7%	13	6	2.2
Jul '25	9	7	\$920K	\$1M	\$1.0M	\$1M	18	17	\$320	\$356	100.9%	102.6%	12	5	1.3
Jun '25	6	4	\$1.3M	\$905K	\$1.5M	\$1M	13	28	\$368	\$250	102.7%	103.0%	14	11	2.3
May '25	5	4	\$880K	\$1M	\$1.0M	\$1M	21	50	\$381	\$127	104.2%	103.0%	9	7	1.8
Apr '25	1	3	\$510K	\$1M	\$510K	\$1M	50	69	\$0	\$61	102.2%	101.9%	9	8	9.0
Mar '25	5	4	\$1.7M	\$1M	\$1.7M	\$1M	78	76	\$0	\$61	102.6%	103.9%	10	4	2.0
Feb '25	3	4	\$1.4M	\$1M	\$1.3M	\$1M	80	61	\$183	\$175	100.9%	102.7%	12	5	4.0
Jan '25	4	5	\$928K	\$875K	\$941K	\$908K	69	50	\$0	\$223	108.3%	102.3%	8	7	2.0
Dec '24	4	6	\$822K	\$911K	\$825K	\$939K	34	38	\$342	\$324	99.0%	99.5%	5	0	1.3
Nov '24	6	6	\$875K	\$1M	\$958K	\$1M	47	40	\$326	\$316	99.7%	99.0%	10	6	1.7
Oct '24	7	5	\$1.0M	\$1M	\$1.0M	\$1M	34	36	\$304	\$339	99.8%	102.0%	15	4	2.1
Sep '24	4	5	\$1.3M	\$1M	\$1.5M	\$1M	39	35	\$319	\$388	97.6%	103.5%	19	9	4.8
Aug '24	5	7	\$1.0M	\$1M	\$1.0M	\$1M	34	30	\$394	\$388	108.5%	104.2%	19	6	3.8
Jul '24	6	7	\$1.2M	\$1M	\$1.0M	\$1M	33	25	\$452	\$423	104.3%	102.5%	20	10	3.3
Jun '24	10	6	\$968K	\$1M	\$1.0M	\$1M	24	26	\$317	\$382	99.7%	101.2%	17	11	1.7
May '24	4	4	\$875K	\$1M	\$975K	\$1M	17	20	\$500	\$388	103.4%	102.6%	14	11	3.5
Apr '24	4	3	\$1.5M	\$1M	\$1.5M	\$1M	36	43	\$330	\$301	100.6%	99.4%	13	8	3.3
Mar '24	3	2	\$950K	\$936K	\$931K	\$930K	7	67	\$334	\$252	103.7%	98.3%	10	8	3.3
Feb '24	2	2	\$1.0M	\$944K	\$1.0M	\$1M	85	77	\$239	\$218	94.1%	96.1%	8	3	4.0
Jan '24	2	3	\$777K	\$898K	\$777K	\$1M	108	61	\$183	\$212	97.3%	97.1%	9	9	4.5
Dec '23	3	4	\$975K	\$1M	\$1.1M	\$1M	39	36	\$233	\$248	97.1%	98.4%	3	0	1.0
Nov '23	5	5	\$940K	\$948K	\$1.1M	\$1M	37	28	\$220	\$170	97.0%	100.3%	6	3	1.2
Oct '23	5	5	\$1.1M	\$903K	\$1.0M	\$966K	33	25	\$290	\$198	101.1%	100.8%	7	4	1.4
Sep '23	4	5	\$754K	\$879K	\$841K	\$1M	15	36	\$0	\$204	102.9%	100.9%	9	4	2.3
Aug '23	6	7	\$805K	\$991K	\$975K	\$1M	28	53	\$305	\$299	98.5%	100.2%	12	8	2.0
Jul '23	6	5	\$1.0M	\$926K	\$1.2M	\$1M	64	51	\$308	\$198	101.2%	104.4%	13	6	2.2
Jun '23	8	5	\$1.0M	\$886K	\$1.3M	\$1M	67	35	\$285	\$194	100.8%	104.2%	14	5	1.8
May '23	1	3	\$610K	\$784K	\$610K	\$841K	21	41	\$0	\$212	111.2%	104.8%	18	9	18.0
Apr '23	6	3	\$957K	\$811K	\$1.1M	\$867K	16	39	\$298	\$297	100.7%	102.5%	14	6	2.3
Mar '23	2	3	\$784K	\$824K	\$784K	\$867K	85	52	\$337	\$274	102.4%	101.6%	14	12	7.0
Feb '23	2	6	\$690K	\$946K	\$690K	\$938K	16	42	\$257	\$249	104.5%	99.9%	12	4	6.0
Jan '23	6	8	\$997K	\$932K	\$1.1M	\$940K	55	53	\$228	\$280	97.7%	97.7%	14	5	2.3
Dec '22	11	8	\$1.1M	\$892K	\$999K	\$846K	55	50	\$262	\$291	97.6%	98.6%	12	2	1.1

© 2025. Based on information from Garden State MLS, LLC for the period of January 2018 through November 2025. Due to MLS reporting methods and allowable reporting policy, this data is only informational and may not be completely accurate. Data maintained by the MLS may not reflect all real estate activity in the market.



CHERIE
BERGER
TEAM



Cherie Berger

cherie.berger@compass.com

M: 908.410.0931



Steven Berger

steven.berger@compass.com

M: 908.256.0307



Ashley Berger-Freitas

ashley.freitas@compass.com

M: 908.432.9818



Karla Gary

karla.gary@compass.com

M: 908.285.3813



Josh Grundfest

josh.grundfest@compass.com

M: 908.698.7665

Compass makes no representations or warranties, express or implied, with respect to future market conditions or prices of residential product at the time the subject property or any competitive property is complete and ready for occupancy or with respect to any report, study, finding, recommendation or other information provided by Compass herein. Moreover, no warranty, express or implied, is made or should be assumed regarding the accuracy, adequacy, completeness, legality, reliability, merchantability or fitness for a particular purpose of any information, in part or whole, contained herein. All material is presented with the understanding that Compass shall not be deemed to provide legal, accounting or other professional services. This is not intended to solicit the purchase or sale of any property. Any and all such warranties are hereby expressly disclaimed. Equal Housing Opportunity.

© Compass. All Rights Reserved. This information may not be copied, used or distributed without Compass' consent.